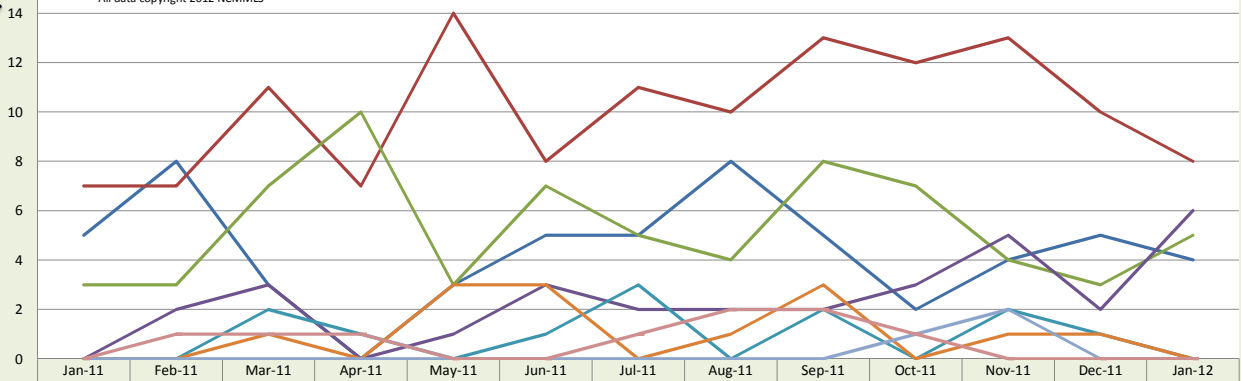


Transylvania County Residential Unit Sales

Units

All data copyright 2012 NCMMLS



	Jan-11	Feb-11	Mar-11	Apr-11	May-11	Jun-11	Jul-11	Aug-11	Sep-11	Oct-11	Nov-11	Dec-11	Jan-12
<\$100k	5	8	3	0	3	5	5	8	5	2	4	5	4
\$100-\$200	7	7	11	7	14	8	11	10	13	12	13	10	8
\$200-\$300	3	3	7	10	3	7	5	4	8	7	4	3	5
\$300-\$400	0	2	3	0	1	3	2	2	2	3	5	2	6
\$400-\$500	0	0	2	1	0	1	3	0	2	0	2	1	0
\$500-\$750	0	0	1	0	3	3	0	1	3	0	1	1	0
\$750-\$1000	0	0	0	0	0	0	0	0	0	1	2	0	0
>\$1000	0	1	1	1	0	0	1	2	2	1	0	0	0
Totals	15	21	28	19	24	27	27	27	35	26	31	22	23